



**UPCOMING EVENTS**

*Applied Behavior Analysis Association International*  
May 26 - 31

BAAMS Business Meeting @  
ABAI  
Sunday, May 28<sup>th</sup> 2017  
7am – 7:50am  
Convention Center 406/407

Expo Poster Session #143  
Saturday, May 27<sup>th</sup> 2017  
8:00pm – 10:00pm

**PHOTO HIGHLIGHTS FROM THE  
BAAMS INAUGURAL CONFERENCE**

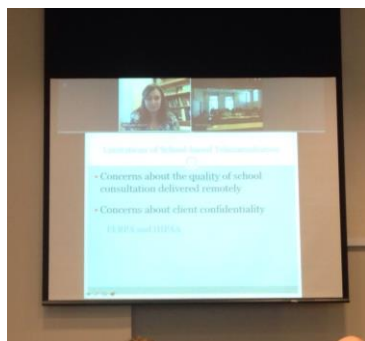
**MARCH 31, 2017 – UNIVERSITY OF SOUTHERN MISSISSIPPI**



*Keynote Address by Dr. Steven Hayes on Contextual Behavioral Science*



*The Mississippi Autism Board held a panel discussion of the state of licensure in Mississippi*



*Invited Speaker Dr. Kimberly Zoder-Martell presenting via go to meeting on the topic of tele-consultation in schools.*



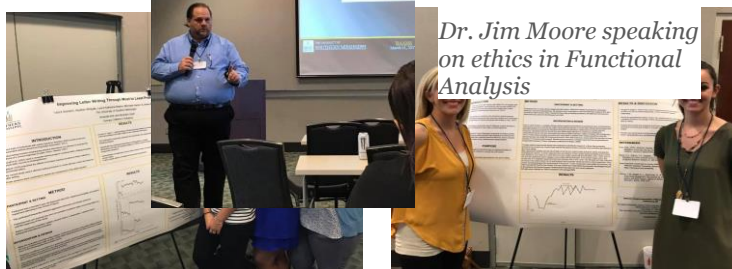
*Press Conference - BAAMS Group Photo*

**Poster presented**



*Dr. Dorothy Scattone presenting for one of the paper sessions*

**Session: 21 and the**



**posters were presenters**

*Dr. Jim Moore speaking on ethics in Functional Analysis*

represented a variety of universities (University of Southern Mississippi, University of Mississippi, Mississippi State University, University of Mississippi Medical Center) and agencies (Will's Way Behavioral, Canopy Children's Solutions) across the state.

## PROGRAM SPOTLIGHT

The Applied Behavior University of Southern graduated its first cohort on students are scheduled to Congratulations to the



Analysis Program at the Mississippi (USM) May 12, 2017! Two more graduate this summer! recent graduates:



**Meleah Ackley**- will continue studies in the School Psychology PhD program at USM.

**Katie Bishop**-accepted a position as Behavior Analyst at the Early Language Institute at Michigan State University.

**Katie Boozer**-accepted a position as Director for the new ABA Clinic within Pine Belt Mental Healthcare in Hattiesburg.

**Cassady Coco**-will remain in the Hattiesburg area consulting with schools and families.

**Parker Lundy**- will continue studies in the School Psychology PhD program at USM.

**BreAnna Newborne**-accepted a position as a Behavior Analyst with Canopy Children's Solutions in Madison.

**Crystal Toche** – will continue her position with Boswell Regional Center in Magee.



## LOCAL RESOURCES

### SPECTRUM ACADEMY AT NEW SUMMIT SCHOOL

New Summit School is excited to announce the expansion of its services to provide a Spectrum Academy. The Academy will focus on school readiness for children on the spectrum. The Spectrum Academy will open this Fall 2017 on the campus of New Summit School at 2510 Lakeland Terrace in Jackson, MS.

Spectrum Academy is an extended service of New Summit School, specializing in children with autism and other developmental delays. The Spectrum Academy will have accreditations with *The Growing Tree* and *Beyond Therapy*. Applied Behavior Analysis (ABA) methods will be used in the classrooms to motivate and teach skills acquisition and positive behavior throughout each day. The Spectrum Academy consists of Special Education Instructors, Applied Behavior Analysis Therapist, Early Childhood Education Instructors, and Board Certified Behavior Analyst (BCBA). We offer additional specialized therapy services including: Speech and Language, Dyslexia Therapy, and Occupational Therapy. Each student is assigned to a classroom based on their age and developmental levels. Educational routes will be given to the child in accordance to the BACB Guidelines, and supervised by a BCBA certified instructor. The Spectrum Center at New Summit School will include classrooms, a resource room, and additional space such as designed rooms for speech and language, dyslexia therapy, and occupational therapy.

New Summit School was established in 1997 as a full-time, educational school offering classes for students in Kindergarten through 12th grade. Although New Summit School (NSS) is designed similarly to traditional schools, emphasis is placed on keeping instructional groups small and teaching to the individual student in a positive and stimulating environment. NSS is committed to an educational philosophy that considers the diverse needs of today's students and families. Our goal is to promote academic achievement and social growth within an environment enriched by economic and ethnic diversity.

New Summit's primary goal is to have the child transition into a school setting like New Summit School with highly trained instructors to monitor their progress. Spectrum Academy at New Summit School offer services this summer and will begin a full program in August 2017.

New Summit is currently looking for RBTs to work in their classrooms. Please see job listing below!

#### **Registered Behavior Technician (RBT) Position – SPECTRUM ACADEMY**

The position will provide services to students with Autism Spectrum Disorder (ASD) under the guidance and supervision of a BCBA. The RBT will assist students in achieving educational and behavioral goals through direct instructions and indirect support in the school setting. This position will plan for, record, and monitor the daily behavior of students here at New Summit. The RBT must have experience in a clinical or educational setting with children with educational, communication, or behavioral difficulties. A college degree in a behavioral health or education related field is preferred. Must complete required training modules, competency check, and exam to obtain and maintain Registered Behavior Technician (RBT) requirements. For more information about the RBT position, please contact Debbie Lewis at [dlewis@nls-sd.com](mailto:dlewis@nls-sd.com) or call at [601.982.7827](tel:601.982.7827).



*Kimberly Bellipanni Hargrove*

## BEHAVIOR ANALYST IN THE SPOTLIGHT

### KIM BELLIPANNI HARGROVE, PHD, BCBA-D

Dr. Kimberly Bellipanni Hargrove is the Clinical Director and one of the cofounders of Will's Way, LLC. Dr. Hargrove is a Board Certified Behavior Analyst, Doctoral (BCBA-D) as well as a certified School Psychologist for both Will's Way and The Children's Center at the University of Southern Mississippi. Will's Way has recently opened a satellite clinic in Ocean Springs on the Mississippi Gulf Coast. Dr. Hargrove's interests include using behavioral methodologies to help children with Autism and other developmental disabilities, school consultation, and offering training opportunities to various community agencies.

Dr. Hargrove received her training from the University of Southern Mississippi School Psychology Program and afterwards spent a 1-year internship and a 3-year Post-Doctoral fellowship at the Kennedy Krieger Institute, part of Johns Hopkins Medical Center in Baltimore, Maryland. While in Baltimore, Dr. Hargrove spent two years working with children with chronic medical conditions as well including brain and spinal cord injuries, and an additional 2 years working in the Pediatric Developmental Disabilities clinic.

When not working, Dr. Hargrove enjoys spending time with her family, listening to live music, and traveling on the weekends.

## MESSAGE FROM THE PRESIDENT

A lot has happened since our last newsletter came out and it is all thanks to our membership!!

BAAMS held its first conference with a registration number of 92 student and full members. We had 1 keynote, 4 invited speakers, 8 sponsors, 21 posters, and tons of learning and fun and raised approximately \$6000 for our organization! Thank you all who attended, volunteered and made the event a success. We held our first business meeting of the year at the conference.

Special committees were established based on our discussion at the business meeting to help address key issues and concerns within our field in Mississippi. If you would like the special committees to add something to their agenda, please contact the committee chairs or email us at [info@baams.org](mailto:info@baams.org).

We are transitioning to a new system to manage our memberships, emails, and website. This system will launch in June 2017. Thank you Matt Davidson for helping us get on board with the new system!

Please note that members will need to renew their membership with BAAMS by June 30<sup>th</sup>. Please look for the reminder emails.

Thank you,  
Neelima Duncan  
Neelima Duncan, Ph.D., BCBA-D  
President – BAAMS

## BAAMS SPECIAL COMMITTEES

BAAMS has recently established the following committees to help tackle the many initiatives that we would like to take on this year and in the upcoming years. Thank you to all who have volunteered their time.

### **Membership Committee:**

**Chair:** *Sarah Kowalczyk*

**Committee Members:** *Amber Orman, Lakeisha Winston, Meleah Ackely, Laura Katherine Baker*

*Membership Role:* Assists in organizing and implementing an effective way to recruit new members and retain current members. Responsibilities include contacting prospective members to invite them to join BAAMS and contact new members solicit to feedback for

### **Development and Dissemination Committee:**

**Chair:** *Matt Davidson*

**Committee Members:** *Dan Gadke, Emily Johnson, Neelima Duncan*

Role Guide and support BAAMS initiatives and programs related to the development of content and its delivery via any form of media. *Responsibilities:* Improve the use of the website as a point of access for BAAMS members as well as for other affiliates, disseminate latest research, develop partnerships with other community agencies, pediatricians, support groups, etc., to promote ABA and BAAMS initiatives, develop position papers targeting key messages related to behavior analysis, provide workshops for families and other key caregivers, collaborate and participate in the BAAMS newsletter.

### **Conference Planning and Continuing Education Committee:**

**Chair(s):** *Dannell Roberts, Kate Kellum & Keith Radley*

**Committee Members:**

*Emily Mathis, Bailey King, Kyle Rowsey, James Cook, Dorothy Scattone, Katelyn Sessums, Hailey Ripple, Emily Johnson*

Led by the APBA and ABAI representatives and will coordinate the BAAMS annual conference, soliciting speakers, coordinating the conference activities, soliciting sponsors, sending out and review call for papers submissions, tracking attendance and registration, disseminating information to presenters and attendees, coordinating continuing education units, recruiting volunteers, and assisting with communications for the conference via social media and other technologies.

### **Advocacy and Insurance Committee:**

**Chair:** *Brittany Cuevas*

**Committee Members:** *Amber Orman, Kimberly Hargrove, Brittany Bell, Karlie Robinson, Jennifer Subramanian, Neelima Duncan, Wayne Williams*

Role: to identify emerging issues and facilitate policy and advocacy efforts and insurance reform efforts on behalf of behavior analysts in the state. Responsibilities include monitoring proposed legislation at the state and federal levels that can impact behavior analytic service provision, supporting BAAMS initiatives with legislation by facilitating member participation, communicate with legislators, insurance agencies, etc. to promote BAAMS goals and objectives, regulate policy efforts, and monitor effectiveness.

## STUDENT SPOTLIGHT

### MELEAH ACKLEY

Meleah is the latest member to join our the BAAMS Executive Committee as the **Student Representative**. Meleah recently graduated from the ABA Master’s Program at the University of Southern Mississippi. In Fall 2017, she will begin her studies as a School Psychology student at USM. Meleah is from Petal, MS.



Meleah Ackley

## RESEARCH HIGHLIGHTS

The Current State of Behavior Analysis in Mississippi is a project that USM ABA student Crystal Toche completed as part of her graduate school studies. The study looks to investigate the growth, barriers, and status of behavior analysis in Mississippi since the passage of Mississippi House Bill 885 in 2015. The project includes a survey that was distributed during the BAAMS conference as well as a panel discussion that was held during the conference.

Of those that attended (an estimated 82 people), 61 surveys were submitted. 25 out of 61 people in attendance were BCBA's. 21 individuals in attendance were graduate students in applied behavior analysis. These two groups combined represent 75% of the conference attendees. The results following will be representative of only the BCBA's.

Of the BCBA's attending the conference, 14 out of 25 also answered they were Licensed Behavior Analyst in MS. 6 individuals were also credentialed as Licensed Psychologist. BCBA's are members of professional organizations. 23 out of 25 BCBA's reported being members of BAAMS.

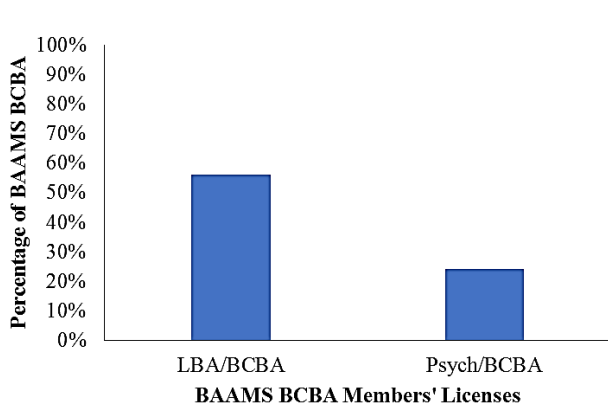


Figure 1 Co-occurring Licenses of BCBA's attending BAAMS

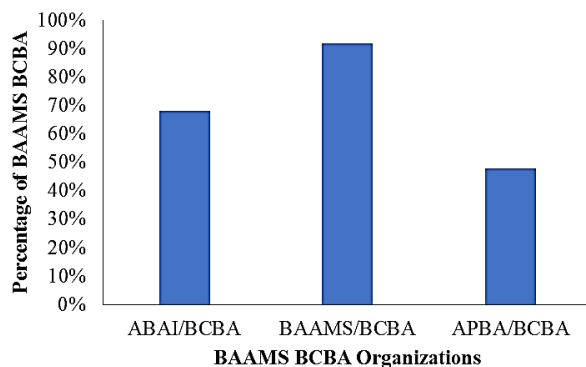


Figure 2 Professional membership of BCBA's attending BAAMS

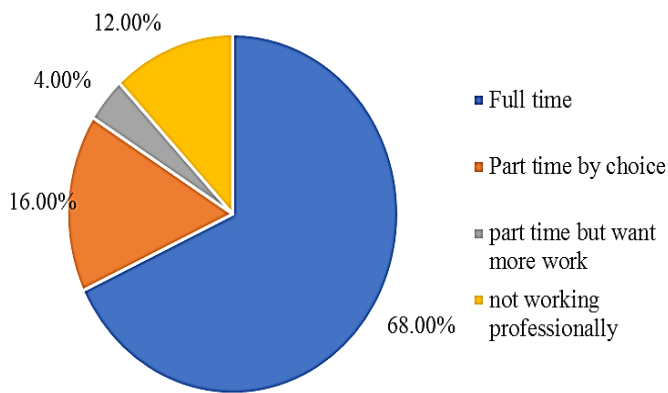


Figure 3 Amount of time engaged in Behavior Analytic work

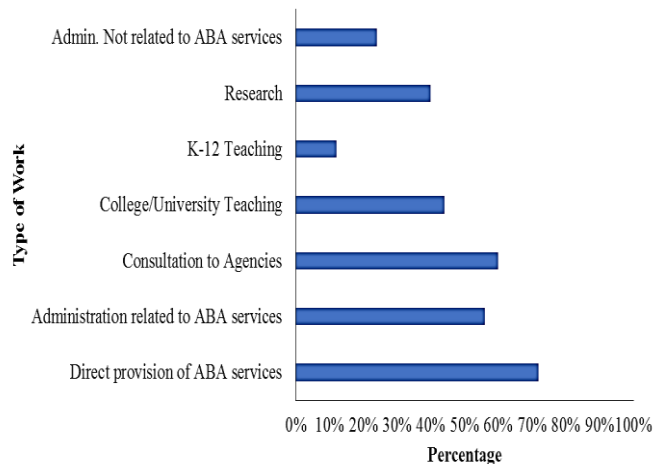


Figure 4 Type of Practice in ABA; Multiple responses were acceptable

BCBA's were also asked what are of work are they typically involved in and could respond to more than one answer. 96% of respondents reported working with individuals with Autism.

### BAAMS SATISFACTION RESULTS

- 18 BCBA's answered questions about
- 90% of those surveyed agreed that BAAMS effectively represented Behavior Analysis in MS
- 94% stated that BAAMS benefits were worth the membership fees
- 78% were interested in volunteer opportunities with BAAMS.

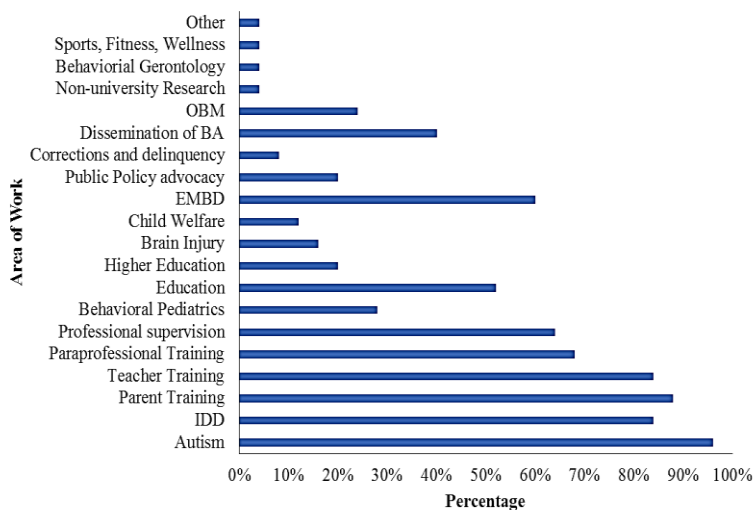


Figure 5 Area of work that BCBA's in MS are involved with

## SHARE!!

If you would like to advertise, post job listings, write an article, share a recent publication, share research endeavors or have something you'd like to share in the next Newsletter, contact Dorothy Scatone at [info@baams.org](mailto:info@baams.org).